

### FACILITIES BEING ESTABLISHED

- CT SCAN (Trauma Center)
- UPGRADATION OF EMERGENCY
- ICU
- CCU
- DIALYSIS
- PHYSIOTHERAPY
- BURN UNIT
- DENTAL UNIT
- LAUNDRY
- MORTUARY
- YELLOW ROOM
- WATER FILTRATION PLANT
- CANTEEN

### SERVICES TO BE OUTSOURCE

- MEP
- JANITORIAL
- PARKING & SECURITY
- CAFETERIA
- AC's & GENERATORS
- LAUNDRY
- CT SCAN
- PATHOLOGY LABS
- HORTICULTURE

### THEMATIC AREAS OF MSDS

- 2.1 ACCESS, ASSESSMENT, AND C. CONTINUITY OF CARE (AAC)
- CARE OF PATIENTS (COP)
- MANAGEMENT OF MEDICATION (MOM)
- PATIENT RIGHTS AND EDUCATION (PRE)
- HOSPITAL INFECTION CONTROL (HIC)
- CONTINUOUS QUALITY IMPROVEMENT (CQI)
- RESPONSIBILITIES OF MANGEMENT (ROM)
- FACILITY MANAGEMENT AND SAFETY (FMS)
- HUMAN RESOURCE MANGEMENT (HRM)
- INFORMATION MANGEMENT SYSTEM (IMS)

### IT INTERVENTIONS

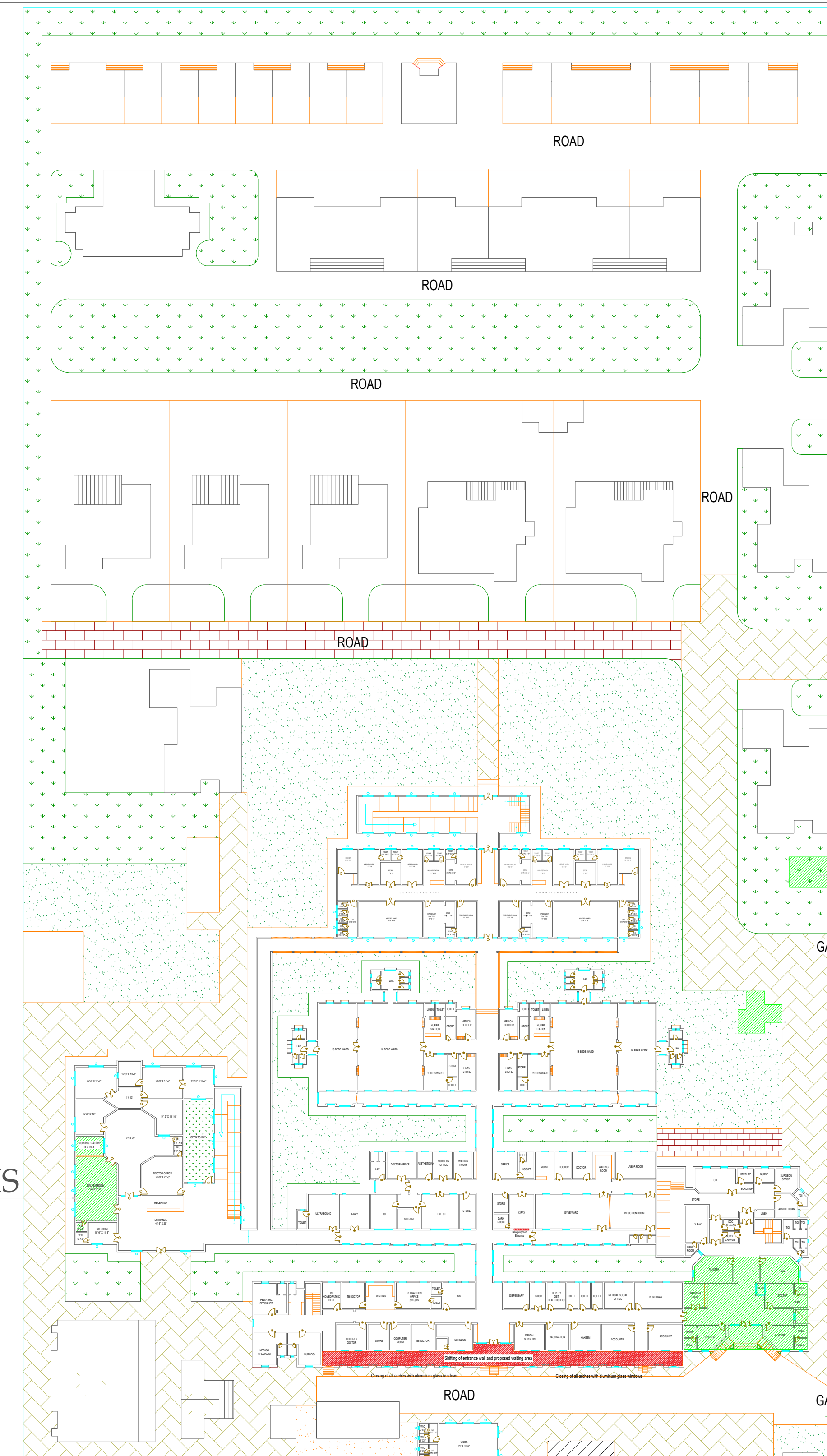
- QUEUE MANAGEMENT SYSTEM
- ELECTRONIC MEDICAL RECORD

### NEW MANAGEMENT STRUCTURE

- NMS
- CONSULTANTS
- NURSES
- WMO's
- EMO's
- AHP
- PHARMACISTS
- PHYSIOTHERAPISTS



BY:  
PROJECT MANAGEMENT UNIT  
PRIMARY & SECONDARY  
HEALTHCARE DEPARTMENT  
GOVT. OF PUNJAB



### LEGEND:

- NEW FACILITY
- UPGRADATION & EXTENSION OF EXISTING FACILITY

DIALYSIS

YELLOW ROOM

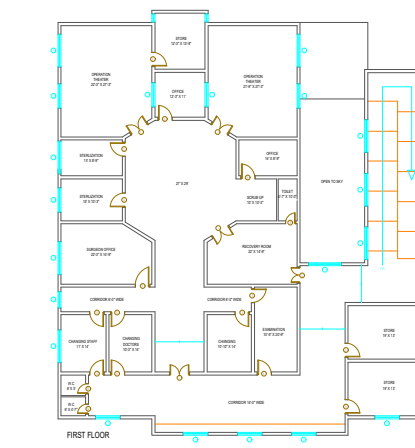
MORTUARY

EMERGENCY

WATER  
FILTRATION  
PLANT  
CANTEEN

ICU CUM CCU

FIRST FLOOR OF  
EMERGENCY



FIRST FLOOR OF  
DIALYSIS

# MASTER PLAN OF THQ HOSPITAL BUREWALA

### MACHINERY & EQUIPMENTS

Area	Item Description	
Reception	Table Chairs Computer Data Copy With Printer Table (2.5 X 4 FT)	
Triage area	Chairs 10	
	B.P apparatus with tape 10	
	Genie with FOOT STEP 10	
	Mercury B.P apparatus 10	
	Lampshade paras 6 each 10	
	Diagnostic set 10	
	E.C.G. Machine with trolley 10	
	Central oxygen with accessories 10	
	NEBUZIZER HD 10	
	SUCKER MACHINE 10	
Minor O.T	CRASH TROLLY EQUIPED 10	
	INSTRUMENT CABINET 10	
	MEDICINE TROLLY 10	
	O.T Table With foot step	
	Center Oxygen supply 10	
	Sucker machine	
	Portable O.T Light	
	Ceiling o light	
	Hot air oven	
	Autoclave	
Constant/ specialized care room	Instrument trolley 10	
	Instrument cabinet	
	GURNEYS 10	
	Sucker machine 10	
	Rebubler HD 10	
	Center Oxygen supply 10	
	Resuscitation Trolley fully equipped 10	
	Defibrillator 10	
	Plastic cot 10	
	Bedside monitor 10	
E.C.G. MACHINE 10		
BP APPARATUS 10		
FOOT STEPPING		
ATTENDANT BECH 10		
Emergency ward	(MOTORIZED BEDS) with accessories (with foot step) 10	
	E.C.G machine with trolley 10	
	Plastic cot 10	
	Bedside monitor 10	
	B.P apparatus with tape 10	
	Rebubler HD 10	
	Sucker machine 10	
	Wheel chair 10	
	Shelker 10	
	ambulance with Mass 10	
Generalized	ambulance with Mass 10	
	ambulance with Mass 10	
	ambulance with Mass 10	
	ambulance with Mass 10	
	ambulance with Mass 10	
	ambulance with Mass 10	
	ambulance with Mass 10	
	ambulance with Mass 10	
	ambulance with Mass 10	
	ambulance with Mass 10	
Others	Vein Printer	
	Acoustic Energy Board	
	<b>Medical Equipment</b>	
	Area	Name of Equipment
	Laboratory	Semi Auto Clinical Chemistry Analyser
		Hematology Analyzer
		Electrode Analyser
		Blood Cell Analyser
		Clinical Microscope
		Water Bath
Hot air Oven		
Distilled water plant		
Auto pipettes		
glass器皿		
X-Rays	Centrifuge Machine	
	Stationary Machine	
	Mobile X-Ray Machine	
	Computed Radiography System	
	Dark Room	
	Lead apron and PPE	
	Detachable metal personal (ADS)	
	Lead glass shield	
	Lead apron	
	Lead apron	
Ultrasound	Portable/Mobile Ultrasound	
	Color Doppler RADIOLOGY	
	Color Doppler RADIOLOGY	
	Color Doppler RADIOLOGY	
	Temporary pace maker	
	Defibrillator	
	E.C.G Machine Three Channel	
	ETT Machine	
	Color display RADIOLOGY	
	Resistor Pump	
CCU	Blood Cabinet	
	Centrifuge Machine	
	Site viewer	
	Clinical Microscope	
	Computed Hemo Dialysis Machine	
	Baby Cot	
	Phototherapy Unit	
	Infant Incubator	
	Pulse Oximeter	
	Infant Incubator	
Nursery	Anaesthesia Machine with Ventilator	
	HEED BEDI PATIENT MONITOR	
	ICU Monitor	
	Defibrillator	
	Defibrillator	
	Electrocardiogram Unit	
	Operation Table	
	Ceiling Operating Light	
	STILLAM STERILIZER	
	Resuscitation trolley With Crash Cart	
O.T (04)	myo table	
	MEILLER OPERATING LIGHT	
	Operation Table	
	ORTHOPEDIC DRILL	
	Pneumatic Torquewells	
	Pneumatic Torquewells	
	Orthopedic Instruments	
	Portable/Mobile Ultrasound	
	Autoclave	
	Delivery Set	
Gynae (20 beds)	Delivery Table	
	ICU Monitor	
	D. S. C. Set	
	Vacuum Extractor	
	CTG Machine	
	E.C.G Machine Three Channel	
	delivery table Lights	
	Baby Cot	
	Delivery trolley	
	Delivery trolley	
Surgical Emergency (10 beds)	Swarm Sterilizer	
	Operation Table	
	MEILLER OPERATING LIGHT	
	Suction Pump	
	Latrines	
	Set of Surgical Instruments	
	Shelker	
	wheel chair	
	foot support	
	Resuscitation trolley With Crash Cart	
Others	Resuscitation trolley With Crash Cart	
	BP Apparatus	
	Ventilator	
	CRP	
	X-RAY PROCESSOR	
	Hand wash Sash Double Bio	
	Hand wash Sash Double Bio	
	Central Medical Gas Pipe Line System	
	Refrigerator glass single Door	
	Dialysis Machine	
CCTV Camera top dome		
Cleaning Machine		
CCTV camera		
Stoves		
DVR for CCTV Camera		
Sound System for announcements		
Fire Extinguishers		
LED TVs		
<b>Machinery and Equipment (General)</b>		
Area	Name of Equipment	
Others	Refrigerator(Domestic) front glass double door	
	Refrigerator glass single door	
	Air Curtain On Door	
	Washing machines for panties	
	Gas Burner for panties	
	Fire Extinguishers DCL	
	LED TV	
	4 Ton air conditioners (Cabinet)	
	2 Ton air conditioners (Cabinet)	
	2 Ton air conditioners (split)	
Ceiling Fans 50"		
Bracket Fan 18"		
Inductive Lamp		
Refrigerators 18 CFM		
Dual Connection of Electricity / Express Line		
Electronic Distribution Boxes		
Protection cabin for electricity distribution boxes		
Bed Sheets and pillow covers		
Pillow		
Blankets with covers		